

College Algebra - Test 1**Name:** _____

1. (5 points) Suppose $g(x) = \left\{ \begin{array}{ll} 3x + 8 & \text{if } x < -2 \\ \sqrt{4 - x^2} & \text{if } -2 \leq x < 0 \\ \sqrt{x} & \text{if } x \geq 0 \end{array} \right\}$.

Evaluate the piecewise defined function at the values indicated below.

(a) $g(-3)$ (a) _____

(b) $g(-2)$ (b) _____

(c) $g(-1)$ (c) _____

(d) $g(0)$ (d) _____

(e) $g(4)$ (e) _____

2. (4 points) Sketch the graph of the piecewise function defined above.

3. (5 points) Write the domain of $f(x) = \frac{1}{4x - 3}$ using interval notation.

3. _____

4. (5 points) Write the domain of $f(x) = \sqrt{1 - 3x}$ using interval notation.

4. _____

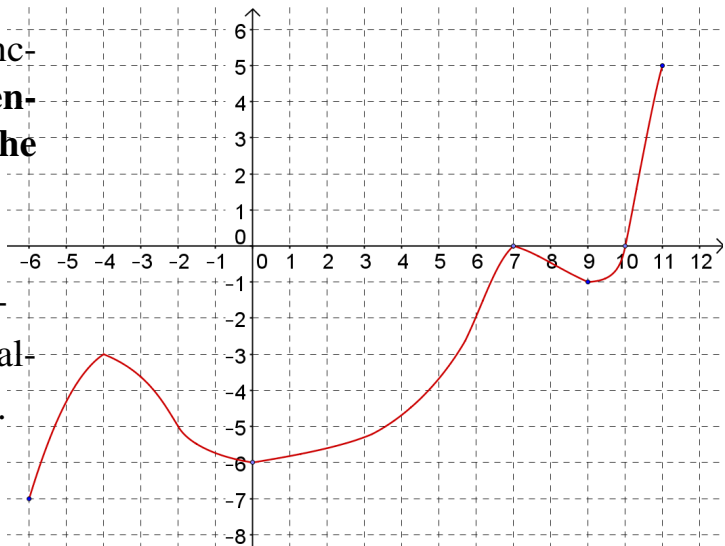
5. (5 points) Find f/g and its domain. $f(x) = \frac{2}{x - 3}$ and $g(x) = \frac{x}{2 - x}$

5. _____

6. (5 points) Find the average rate of change of $f(x) = 5x^2 - 2x$ from $x_1 = 3$ to $x_2 = 4$

6. _____

7. (12 points) The graph of a function f is given. Assume the entire graph of f is shown in the figure.



(a) Find all *local* and absolute maximum and minimum values of the function and the value of x at which each occurs.

(b) State the x intervals for which $f(x) > 0$.

(c) State the x intervals for which $f(x) < 0$.

(d) Find the x intervals on which the function is *increasing*.

(e) Find the x intervals on which the function is *decreasing*.

(f) Find $f(-4)$. (f) _____

(g) Find $f(9)$. (g) _____

Directions: Sketch the graph of the function, not by plotting points, but by starting with the graph of a standard function and applying transformations. Label at least 3 points on your final graph.

8. (5 points) $h(x) = -3|x + 3| + 4$

Find $f \circ g$ its domain.

9. (5 points) $f(x) = \sqrt{x+4}$ and $g(x) = x^2$.

10. (5 points) Find the inverse function of $f(x) = \sqrt[3]{x+3}$

10. _____

Directions: You are **NOT** allowed to use a calculator, computer, textbook or person as help on this Test. Show **ALL** of your work on **ALL** of the questions if you want full credit. Scratch paper is not allowed. Tutor help is not okay.

Use $f(x) = x^5 - x^4 - 5x^3 + x^2 + 8x + 4$ for questions 1 through 8.

1. (5 points) Find all the zeros of $f(x)$. What is the multiplicity of each root?

1. _____

Test 2

2. (2 points) Write the complete factorization of $f(x)$ here.

2. _____

3. (2 points) What is the domain of $f(x)$?

3. _____

4. (2 points) Find the y -intercept of $f(x)$

4. _____

5. (2 points) Write an end behavior description for $f(x)$

5. _____

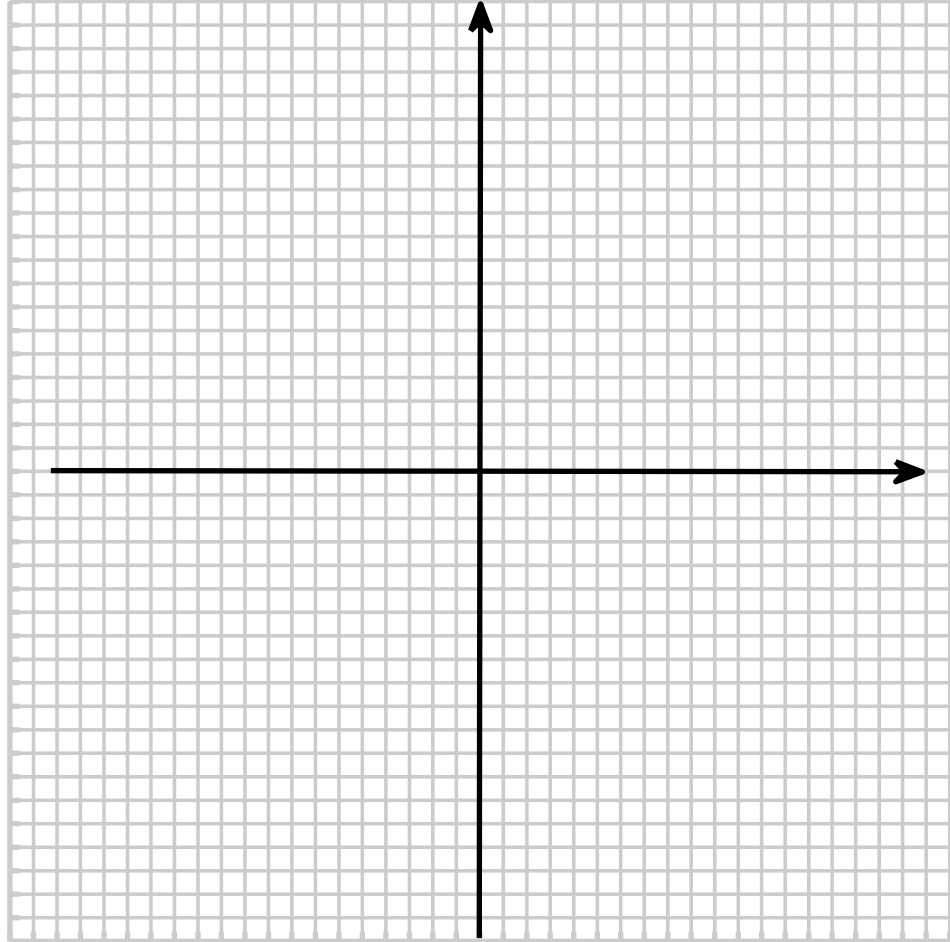
6. (2 points) Find the solution set to $f(x) > 0$

6. _____

7. (2 points) Find the solution set to $f(x) < 0$

7. _____

8. (3 points) Graph $f(x) = x^5 - x^4 - 5x^3 + x^2 + 8x + 4$



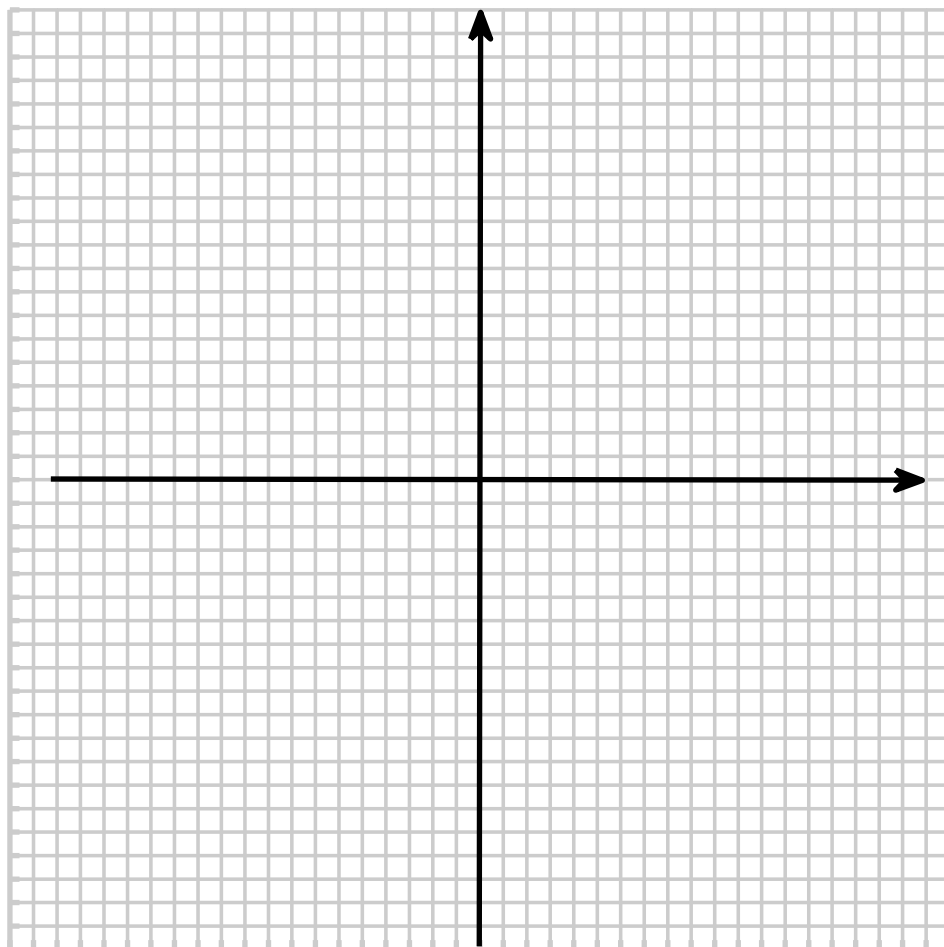
For questions 9 through 16, use $f(x) = \frac{x - 1}{x^3 - 4x}$

9. (2 points) Find the vertical asymptote(s) of $f(x)$ 9. _____
10. (2 points) Find the domain of $f(x)$ 10. _____
11. (2 points) Find the x -intercept(s) of $f(x)$ 11. _____
12. (2 points) Find the y -intercept of $f(x)$ 12. _____
13. (2 points) Find the horizontal asymptote of $f(x)$ 13. _____
14. (2 points) Find all x values for which $f(x) > 0$ 14. _____

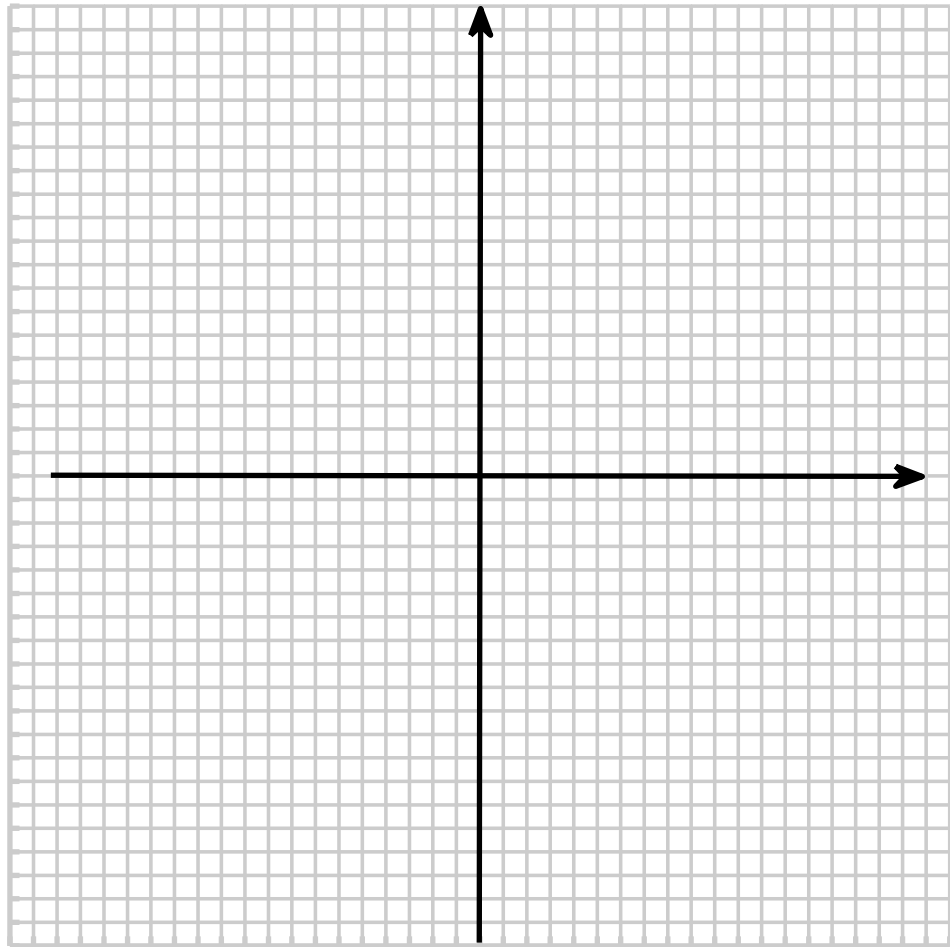
15. (2 points) Describe the behavior of the graph of f around its vertical asymptote(s). Use the arrow notation taught in class.

15. _____

16. (4 points) Graph $f(x) = \frac{x - 1}{x^3 - 4x}$



17. (5 points) Graph $f(x) = \frac{2x^2 - x - 3}{x - 2}$



18. (4 points) Find the quotient and the remainder for $\frac{x^4 - 16}{x^2 + 3x + 1}$

18. _____

Find a mathematical model that represents the statement. Then determine the value of the constant of proportionality, k .

19. (4 points) z varies jointly as x and y . It is known from experimental results that $z = 64$ when $x = 4$ and $y = 8$.

19. _____

Find a mathematical model for the verbal statement.

20. (2 points) y varies inversely as the square of x .

20. _____

21. (4 points) Find a polynomial with real coefficients that has zeros at $x = 2$ and $x = 3 - 2i$. Write the polynomial in descending order (leaving your polynomial in factored form doesn't constitute a full credit answer).

21. _____

Test 2

Use $g(x) = 3x^2 + 2x - 7$ to answer questions **22** through **28**.

22. (4 points) Use the quadratic formula to find the zeros of

$$g(x) = 3x^2 + 2x - 7$$

23. (3 points) Estimate the value of each root without a calculator.

24. (4 points) Express the quadratic function $g(x) = 3x^2 + 2x - 7$ in standard (vertex) form.

25. (1 point) Find the vertex of $g(x) = 3x^2 + 2x - 7$. Does f open up or down?

25. _____

26. (2 points) What is the range of g ?

26. _____

27. (3 points) For what x values is the graph of g below the x axis?

27. _____

28. (2 points) Find the solutions to the inequality $g(x) > 0$.

28. _____

No Calculators or Computing Devices on this section. Once you turn this section in, you may NOT have it back! Use Algebraic Notation AND Show All of Your Work.

1. (5 points) **Find the standard form of the equation of the parabola with the given characteristic(s).**

Vertex: $(x, y) = (-1, 2)$; focus: $(-1, 0)$

1. _____

2. (5 points) **Write the equation of a circle in standard form, and then find its center and radius.**

$$x^2 + y^2 - 4y = 0$$

2. _____

3. (6 points) Identify the conic by writing its equation in standard form, then sketch its graph. Be sure to label foci, asymptotes and vertices on your graph if that is appropriate.

$$y^2 - x^2 + 4y = 0$$

3. _____

4. (5 points) This is a **Matching question** associated with the theory on graphical translations of functions. Suppose $f(x) = 3^x$. Relative to the graph of $f(x)$ the graphs of the following functions have been changed in what way?

- | | |
|--------------------------|-----------------------------------|
| _____ $g(x) = -3^x$ | a.) shifted 5 units right |
| _____ $g(x) = 3^{(x+5)}$ | b.) reflected about the x axis |
| _____ $g(x) = 3^x + 5$ | c.) shifted 5 units left |
| _____ $g(x) = 3^{(x-5)}$ | d.) shifted 5 units down |
| _____ $g(x) = 3^x - 5$ | e.) shifted 5 units vertically up |

5. (4 points) Use the One-to-One Property to solve the equation for x .

$$3^{2x-3} = \frac{1}{81}$$

5. _____

6. (5 points) Sketch the graphs of $f(x) = 2^x$ and $g(x) = \log_2(x)$ in the same coordinate system, and then tell me what the domain and range of each function is.

7. (1 point) What number is $\log_7(49)$ equal to? 7. _____

8. (1 point) What number is $\log_5(\sqrt{5})$ equal to? 8. _____

9. (1 point) What number is $\ln(e^3)$ equal to? 9. _____

10. (1 point) What number is $\ln(e^3)$ equal to? 10. _____

11. (1 point) What equation represents the vertical asymptote for

$$f(x) = \log_2(x)$$

11. _____

12. (5 points) Condense the following expression to the logarithm of a single quantity.

$$\frac{1}{3} \left[\log_8 y + 2 \log_8(y + 4) \right] - \log_8(y - 1)$$

13. (4 points) Solve the equation.

$$\log_7(x - 3) + 1 = 2$$

13. _____

14. (5 points) Use the method of substitution to solve the system

$$\begin{cases} 3x^2 + 4x - y = 7 \\ 2x - y = -1 \end{cases}$$

15. (5 points) Solve the system $\begin{cases} x - 2y = 3 \\ -2x + 4y = 1 \end{cases}$

15. _____

16. (5 points) Solve the system $\begin{cases} 2x - y = 1 \\ 4x - 2y = 2 \end{cases}$

16. _____

Calculator Section

Name: _____

Directions: After you turn this in, please pick up the no-calculator section of the exam, which has 12 questions. You are allowed to take THIS paper back to work on or double check your work, **AFTER** you turn in the no-calculator section of the exam.

17. (5 points) The number of bacteria in a culture is increasing according to the law of exponential growth. After 3 hours, there are 100 bacteria, and after 5 hours there are 600 bacteria. How many bacteria will there be after 8 hours

17. _____

Test 4 – Review

Name: _____

No Calculators or Computing Devices allowed! Use Algebraic Notation AND Show All of Your Work.

1. (6 points) Use Gaussian elimination to find the complete solution of the system, or show that no solution exists.

$$\begin{cases} x + y + z = 0 \\ x - y + z = 0 \\ x - y - z = 0 \end{cases}$$

1. _____

2. (6 points) Use Matrices and Elementary Row Operations to find the complete solution of the system, or show that no solution exists.

$$\begin{cases} x - 2y - 3z = -1 \\ 2x + y + z = 6 \\ x + 3y - 2z = 13 \end{cases}$$

2. _____

3. (a) (2 points) Write a matrix equation equivalent to the following system.

$$\begin{cases} 2x + 3y = 2 \\ x - 2y = 8 \end{cases}$$

(a) _____

- (b) (4 points) Find the inverse of the coefficient matrix, and use it to solve the system.

(b) _____

4. (5 points) Solve $\begin{cases} 2x + 5y = 16 \\ 3x - 7y = 24 \end{cases}$ using Cramer's Rule.

4. _____

5. Let $A = \begin{bmatrix} 1 & -5 \\ -3 & 7 \end{bmatrix}$, $B = \begin{bmatrix} 2 & 7 \\ 1 & 0 \end{bmatrix}$, $C = \begin{bmatrix} 1 & 3 & 1 \\ -2 & 7 & 2 \end{bmatrix}$

Carry out the indicated operation, or explain, using complete sentences, why it cannot be performed.

(a) (4 points) $2A + B$

(b) (4 points) BC

(c) (2 points) C^{-1}

(d) (2 points) $\det(C)$

6. (6 points) Find the partial fraction decomposition of $\frac{x - 2}{x^2 - 6x + 5}$.

6. _____

7. Only one of the following two matrices has an inverse.

$$A = \begin{bmatrix} 3 & 1 & -2 \\ 4 & 2 & 5 \\ -6 & 3 & -1 \end{bmatrix}, \quad B = \begin{bmatrix} 3 & 0 & 0 \\ 2 & 5 & -5 \\ 1 & -6 & 6 \end{bmatrix}$$

(a) (5 points) Find the determinant of each matrix. (a) _____

(b) (1 point) Use the determinants from part (a) to identify which matrix has an inverse.

(b) _____

8. (6 points) Sketch the graph (and label the vertices, or boundary intersections) of the solution set of ordered pairs of the system.

$$\begin{cases} 3x + y < 3 \\ 4 - y < 2x \end{cases}$$